



UScale IAD S196/S1224 Gateway

The UScale Integrated Access Device IAD (S196/S1224) is suitable for IP telephony networks and unified communications solutions to connect legacy analog subscribers to IP telephony networks.

By multiplexing the inventory of analog phones, the UScale IAD S196/S1224 helps reduce the initial investment in building an IP telephony network.

UScale S196/1224 series products support 96 to 224 analog user channels to accommodate access scenarios with different user capacities.

Feature

Complete product portfolio to meet multiple needs

- Provides 32-224 analog user channels to meet different user capacity requirements
- Rack mounting mode
- Deployment flexibility and simplicity

Adaptable to multiple solutions

- Integrated IP telephony network, UC, IMS (IP Multimedia Subsystem) and NGN (Next Generation Network) solutions for analog user access

Product



High reliability

- Multiple ways to ensure highly reliable access, including dual attribution, dual registration and self-switching capabilities

High quality voice

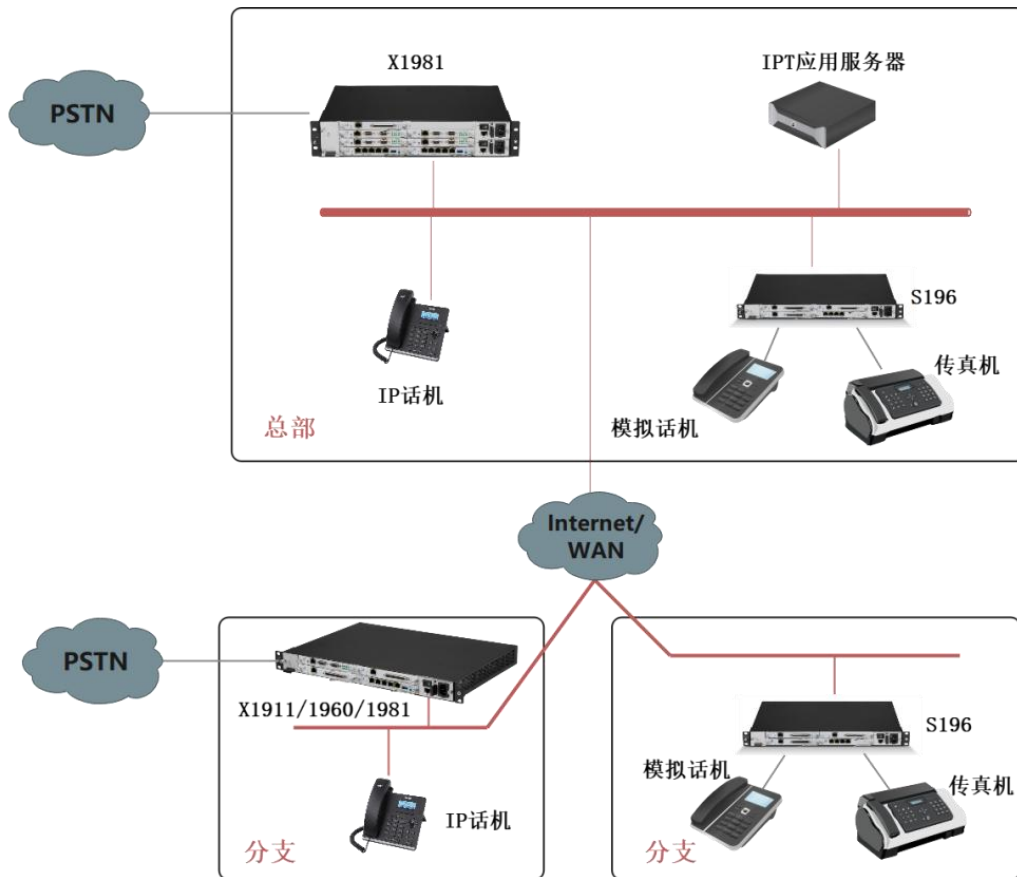
- Multiple voice codecs ensure high quality voice services

Multiple management and maintenance methods



- Built-in WEB management interface, easy to operate
- Support batch configuration

Application

UScale IAD S serialization can be used in IP telephony network solutions and UC solutions to access analog users in various scenarios, such as SOHO (Small Office Home Office), small and medium-sized enterprise branch offices, etc. The UScale S-Series is also available for IMS and MGN solutions for connecting remote analog users.



S Series Specification

Interfaces / Features		UScale S196	UScale S1224
Appearance			
Analog Interface	FXS	32~96	32~224
	FXO	N/A	N/A
Physical Interface	WAN	1	1
	LAN	2	2
	Console	1	1
Support Protocols	SIP	√	√
Reliability	Self-exchange	√	√
	Dual Attribution	√	√
	Dual Registration	√	√
Specification	Size	Standard 19-inch 1U frame 44×440×316.6	Standard 19-inch 2U frame 86×440×316.6
	Weight	6kg	10kg
	Power supply	Input: 100/240V AC	Input: 100/240V AC
	Power consumption	150W	250W

