

## Overview

OpenVox Unified Communication Platform (UCP) is an ideal solution to integrate data, voice and video in one product for SME market. The state of art design provides unparalleled performance, flexibility, reliability, availability, and still keeps effective cost.

UCP is a family of OpenVox products including Chassis, VOIP gateway adapters, telephony interface adapters, IPPBX processor adapters, Ethernet switch adapters etc. The key thought of UCP is distributing different hardware blocks as standard physical size adapter and interconnecting them through high speed Ethernet bus. The bus signal and power trace are combined into backplane of a chassis. Different adapters connect to backplane through a unified connector and interconnect through Ethernet.

## Features

### Reliability:

- Passive Backplane
- Hot-plug line card
- Swappable fan module (2U model)
- Avoid single point of failure
- Star topology bus
- Smart module (Build in CPU on each line card)
- Compact PCI long life backplane connector

### Flexibility:

Symmetrical module design cover from small size desktop to rack mountable 2U and more

- FXS/FXO
- GSM/WCDMA/LTE
- BRI
- T1/E1
- Processor

### Availability:

\* Wide software selection: Asterisk, Elastix, FreePBX, 3CX, etc.

## Chassis Slot Description

Each slot in an UCP chassis have a unique slot number start from 0, different model of chassis have different orientation. Each adapters installed will occupy at least 1 slot, some adapter model must be installed in special use slot. But most slots are equivalent.

- VS-CHS-2120 Slot Orientation

Slot 3	Slot 7	Slot 11
Slot 2	Slot 6	Slot 10
Slot 1	Slot 5	Slot 9
Slot 0	Slot 4	Slot 8

- Available Adapter of Each Slot

### Shortcut for different adapters shown as below:

A is one pcs of adapter from these models: VS-GWM420G, VS-GWM420W, VS-GWM420L, VS-AGU-E1M820-S, VS-AGU-E1M820-O, VS-AGU-E1M820-OS

B is one pcs of adapter from these models: VS-ET2004, VS-ET2002, VS-ET2001, VS-CCU-N2930AM?

C is VS-CCU-128SSD, VS-CCU-500HDD

D is VS-CCU-N2807AM, VS-CCU-N2930AM

Slot #	Function	Available Modules
0	Must install network switch adaptor	VS-ECU-M3110?
1	Optional	A
2	Optional	A/B/D
3	Optional	A/D
4	Optional	A/B/D
5	Optional	A/B/D
6	Optional	A/B/C/D
7	Optional	A/D
8	Optional	A/B/D
9	Optional	A/B/D
10	Optional	A/B/C/D
11	Optional	A/D

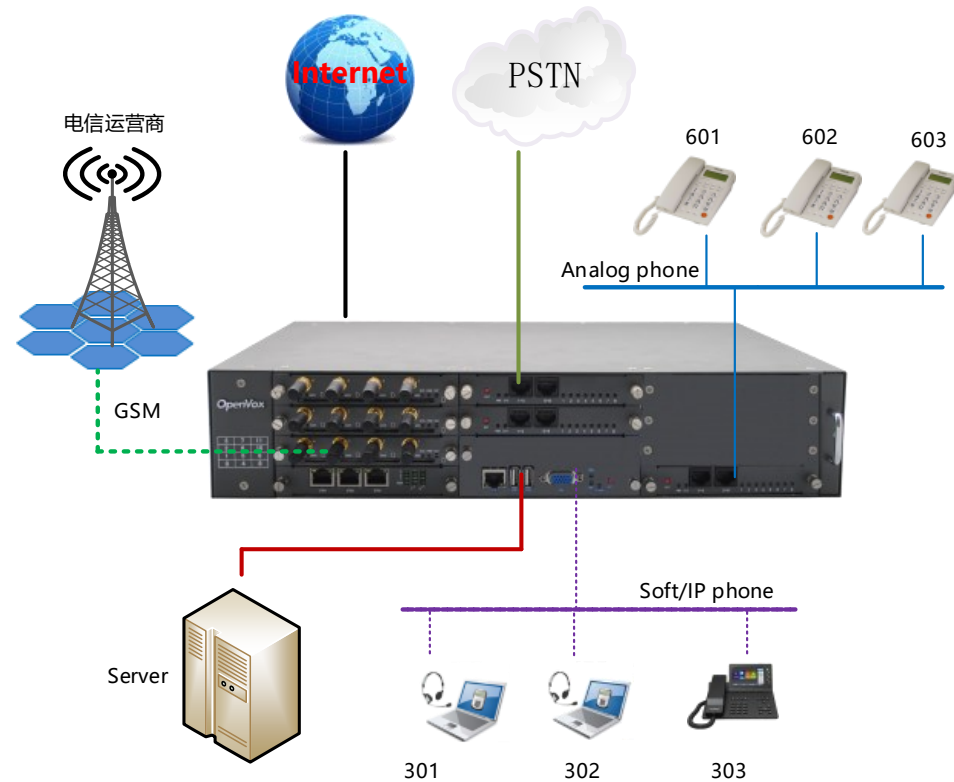
Note: When you need to match C, the processor must be placed in slot 5 or 8

## Family Products

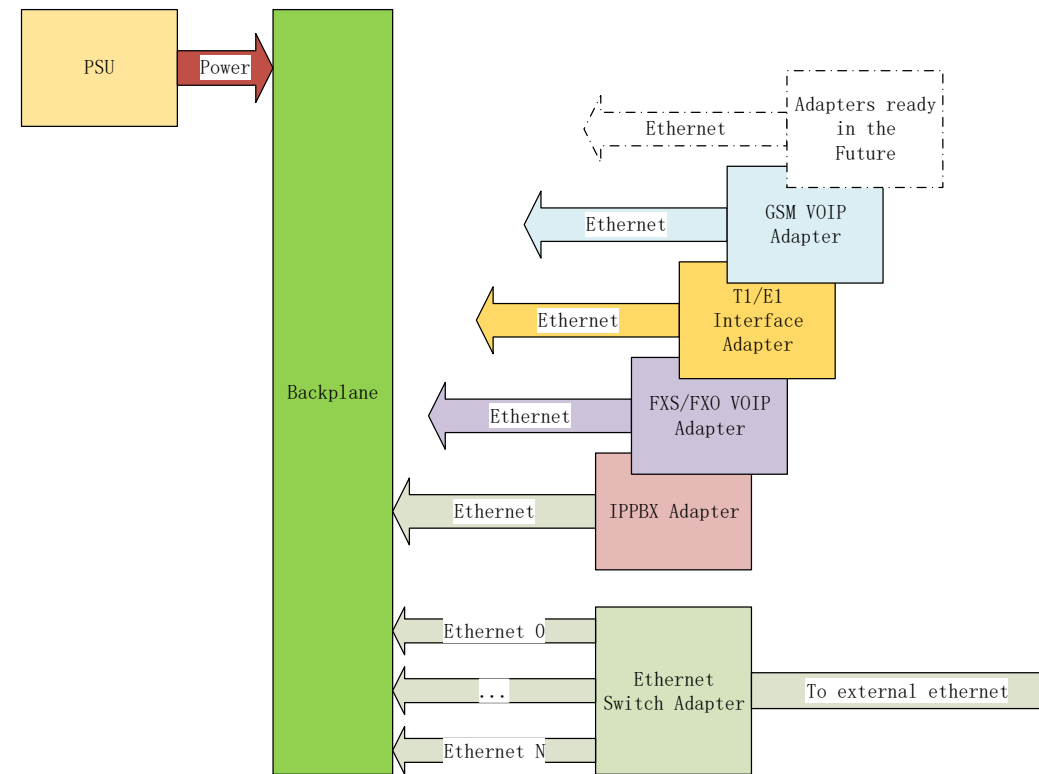
Chassis and Ethernet Switch Adapter	
VS-CHS-2120	2U 19 inch rack mount 12-slots chassis
VS-ECU-M3110	3 port 10/100M Ethernet switch adapter for VS-CHS-2120
UMTS VoIP Adapter	
VS-GWM420G	4 port GSM VoIP gateway adapter (M35 Module)
VS-GWM420W	4 port WCDMA VoIP gateway adapter (UC15 Module)
VS-GWM420L	4 port LTE VoIP gateway adapter (EC20 Module)
Analog VoIP Adapter	
VS-AGU-E1M820-S	8 port FXS VoIP gateway adapter
VS-AGU-E1M820-O	8 port FXO VoIP gateway adapter
VS-AGU-E1M820-OS	4 port FXS + 4 port FXO VoIP gateway adapter
T1/E1/J1 Interface Adapter <sup>*1</sup>	
VS-ET2004	4 port E1/T1/J1 adapter
VS-ET2002	2 port E1/T1/J1 adapter
VS-ET2001	1 port E1/T1/J1 adapter
Processor Adapter	
VS-CCU-N2807AH	N2807 Processor adapter with 2.5" HDD mount kit (This adapter occupy 2 slots.)
VS-CCU-N2930AM	N2930Processor adapter , Mstat SSD (This adapter occupy 1 slot.)
2.5 HDD Adapter	
VS-CCU-128SSD	128G SSD, Must be with the processor, the processor has a system disk can be external storage
VS-CCU-500HDD	500G HDD, Must be with the processor, the processor has a system disk can be external storage

\*1: This adapter occupy 2 slots , it must be with the processor, pre-installed gateway system, can also install the system by itself, as a board

## Application Topology 1



## Architecture



## Customize UCP System

- Step1: Confirm system scale and function  
A UCP system is a combination of chassis and different adapters, for example, to build a 16 port FXS + 1 port E1 + 4 port GSM + 1 processor with 2.5" HDD. You will need:

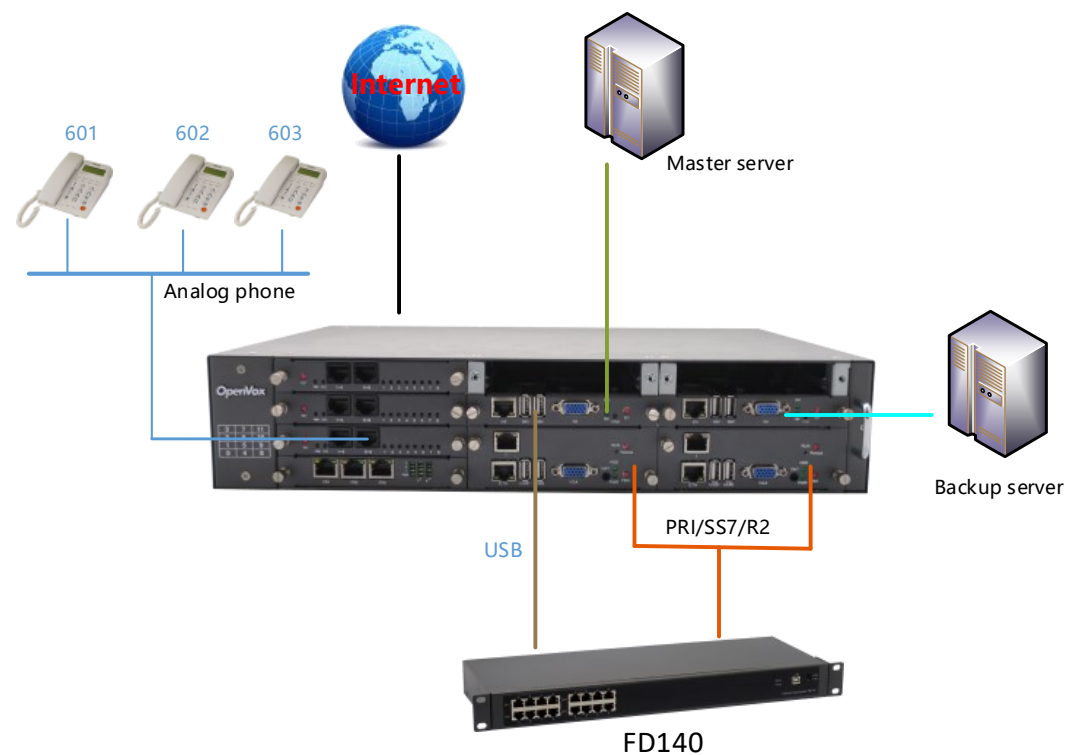
- 1\*VS-AGU-E1M800-S
- 1\*VS-AGU-E1M800-O
- 1\*VS-EIU-1001
- 1\*VS-GGU-E1M401
- 1\*VS-CCU-2930AM

All above adapters occupy 6 slots.







- Step2: Select chassis
  - \* The small and tiny chassis have built in Ethernet switch thus do not need one special use slot for Ethernet switch adapter.
  - \* Some adapter only support by some special slot or have some relationship with processor adapter.
  - \* If want to reserve spare slots for future expand, count on them.
  - \* Check chassis slot description section below for slot/ adapter combination possibility and system scale.

- Step3: Write down all the part numbers, send to OpenVox or OpenVox partners.  
Question?  
Ask OpenVox ([sales@openvox.cn](mailto:sales@openvox.cn)).

## Application Topology 2



## Modules

 VS-GWM420G	 VS-AGU-E1M820-S	 VS-GWM420W
 VS-ET2004	 VS-AGU-E1M820-O	 VS-CCU-N2930AM

3-Month "No-Questions Asked" Return Policy  
One-year Time Warranty